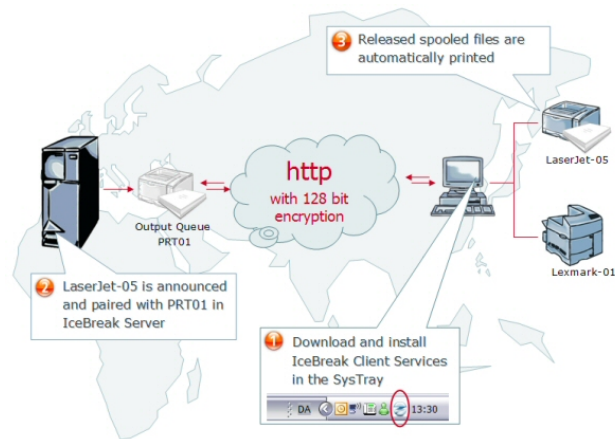


# IceBreak Web Printing



## Hardware Requirements:

- An IBM iSeries
- An external PC
- A printer(s) connected to the PC.

## Software Requirements:

- For IBM iSeries: IceBreak
- For the PC: IceBreak Client Software

**IceBreak** must be installed and active on the iSeries.

Download and install from <http://www.icebreak.org/dwnlfree.htm>

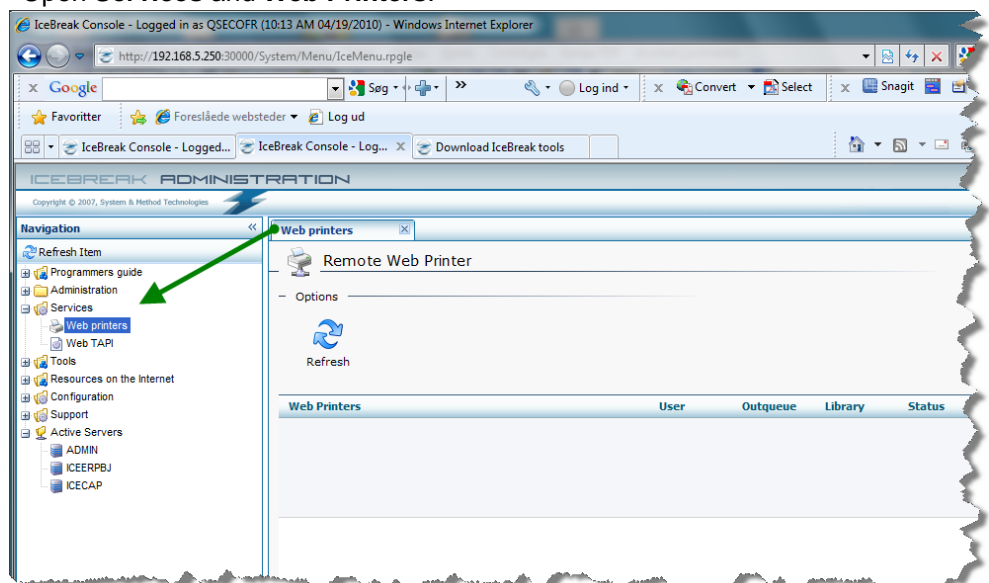
*(All IceBreak features can be accessed for 30 day trial period.  
A license key for the specific Web Printing product is afterwards needed.)*

After the IceBreak installation:

- Type: Go IceBreak on a 5250 menu
- Press 17 to make sure the IceBreak Subsystem is active.
- Select option 12. 'Work with IceBreak servers'
- Select ADMIN and Use 12=Start server.

It will open the **Administration** menu in a browser.

Open **Services** and **Web Printers**.



You are now ready to install the **Web Printing Client** on the external PC.

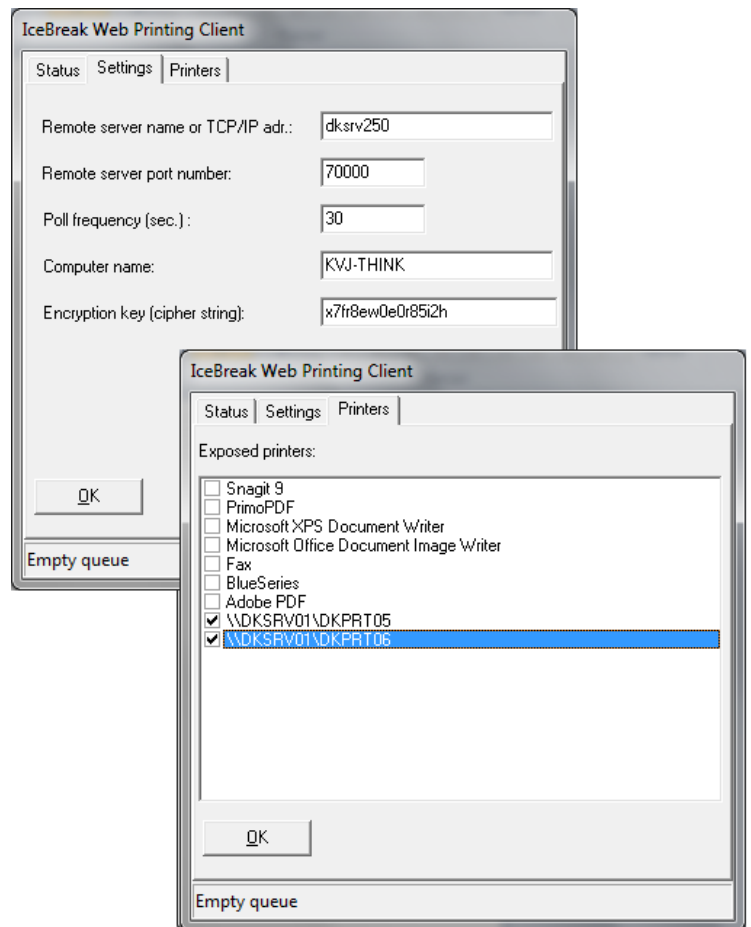
Download and install from <http://www.icebreak.org/getfrmwrks.asp>



The Web printing Client will be installed in the System tray on the PC. The IceBreak logo is displayed in the system bar.



Fill in Settings for Remote Server name or TCP/IP address.

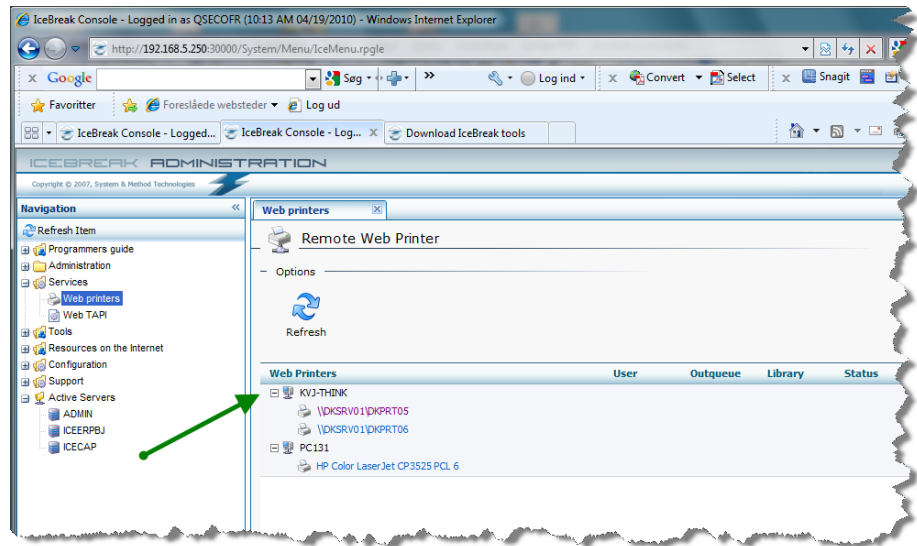


Select the printer(s)

Press OK

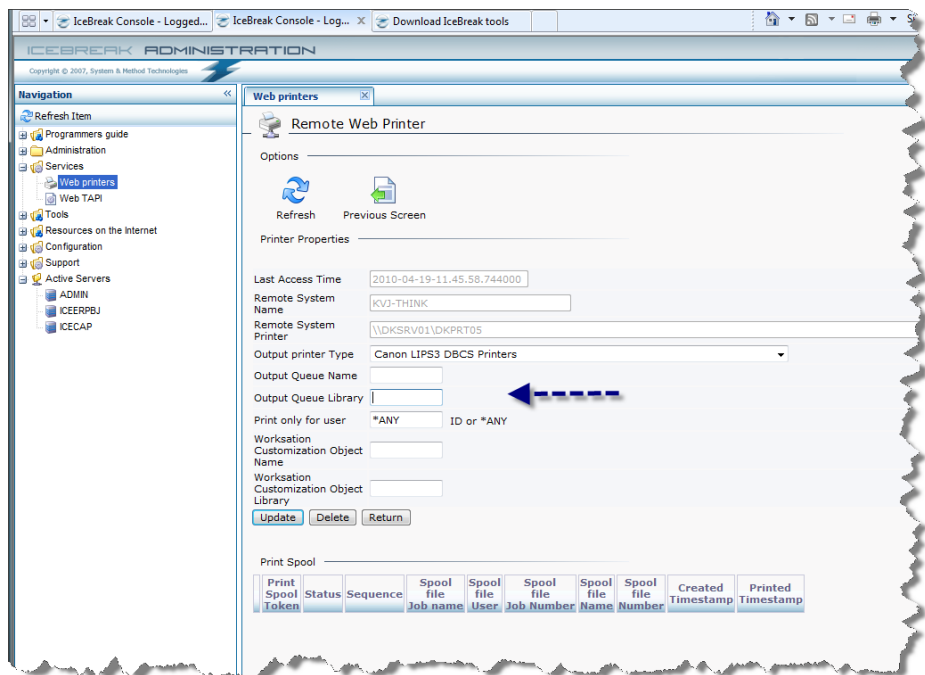
The external PC and printer is now ready for Web printing

Open **Web Printers** in the administration menu.



The external PC and the selected printers will appear on the list.  
(Allow some time for first time connection).

Double click on the particular printer name in order to assign an Output queue to the printer.



Any print sent to that iSeries Output Queue will now be printed on the external printer.  
The print status can be followed on the log.

