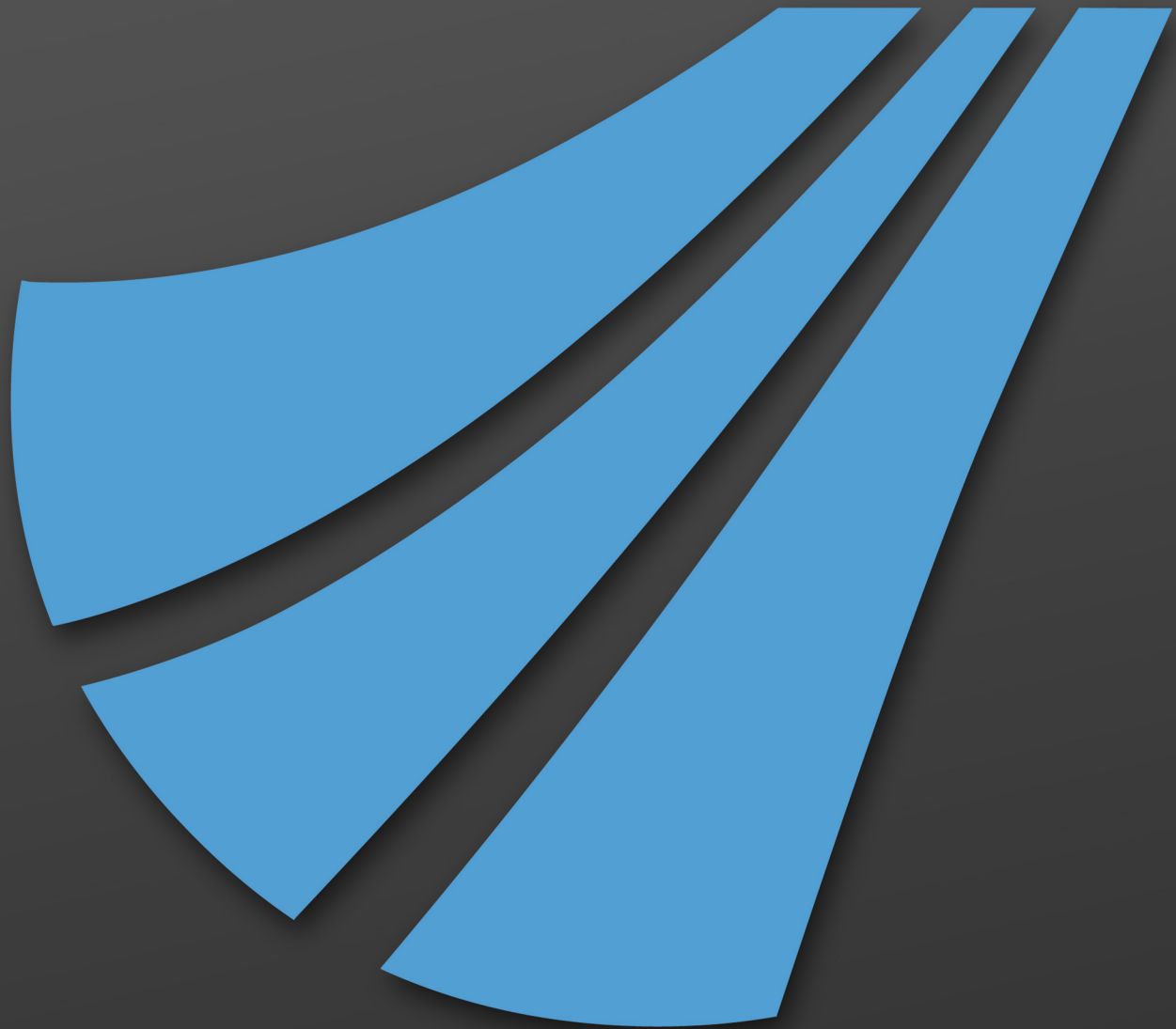


# WinPrint Manual

version **2011**



InterForm400®  
**eForms & Intelligent Document Management  
for System i, i5, iSeries & AS/400**

[www.interform400.com](http://www.interform400.com)

**InterForm A/S**  
Hyldalvej 11  
DK-9541 Suldrup  
Denmark

tel: +45 98 37 80 17  
fax: +45 98 37 87 99  
e-mail: [support@interform400.com](mailto:support@interform400.com)  
[sales@interform400.com](mailto:sales@interform400.com)  
www: <http://www.interform400.com>

Document **WPE-001-01**  
Users Manual for WinPrint V1.M001

Printed in Denmark 2011

No part of this guide may be photocopied or reproduced in any way, except where noted, without the written consent of InterForm A/S.

All the names in this manual are fictional and any resemblance to existing people or firms is purely coincidental.

© Copyright InterForm A/S 2011. All rights reserved.

AS/400, iSeries and System i are registered trademarks of the IBM Corporation.

HP-PCL is a trademark of Hewlett Packard.

All other trademarks mentioned in this document are registered trademarks of their respective owners.

---

# Table of Contents

<b>Table of Contents</b> .....	<b>4</b>
<b>Introduction to WinPrint</b> .....	<b>5</b>
Installing the WinPrint Client.....	<u>5</u>
<b>Starting up the WinPrint Client</b> .....	<b>8</b>
Starting the WinPrint Client Automatically.....	<u>8</u>
<b>Starting up the WinPrint subsystem</b> .....	<b>10</b>
1. Via the Menu.....	<u>10</u>
2. With the AUTO_FORM subsystem.....	<u>10</u>
3. Via a command.....	<u>11</u>
<b>Configuring WinPrint</b> .....	<b>12</b>
Changing the port number on the System i.....	<u>12</u>
Changing configuration on the WinPrint Client.....	<u>12</u>
<b>Using WinPrint</b> .....	<b>14</b>
<b>Limitations of WinPrint</b> .....	<b>18</b>
<b>Troubleshooting</b> .....	<b>19</b>
<b>Index</b> .....	<b>20</b>

---

# Introduction to WinPrint

WinPrint is a charged module for InterForm400. The WinPrint client is installed on a PC running Windows and in this way InterForm400 can print (from the System i) onto any printer, that is installed on this PC.

InterForm400 (which runs solely on the System i) comes with its own 'printer drivers' making it possible to print in PCL (HP Printer Command Language), ZPL (Zebra Printer Language) and even IPL (Intermec Printer Language).

Using our own printer data streams makes it possible to create very efficient print out and in this way InterForm400 itself can fully decide exactly what commands to send to the printer and in this way make full use of printer specific features. The downside is, that InterForm400 can only print to printers that understands one of the printer languages mentioned above.

There are printers, that understands neither of the printer languages mentioned above (e.g. some label printers), so it is unfortunately not possible to print from InterForm400 to such printers - unless you use WinPrint. With WinPrint you can print on as good as any printer - if you can just get a windows driver for it.

---

## Installing the WinPrint Client

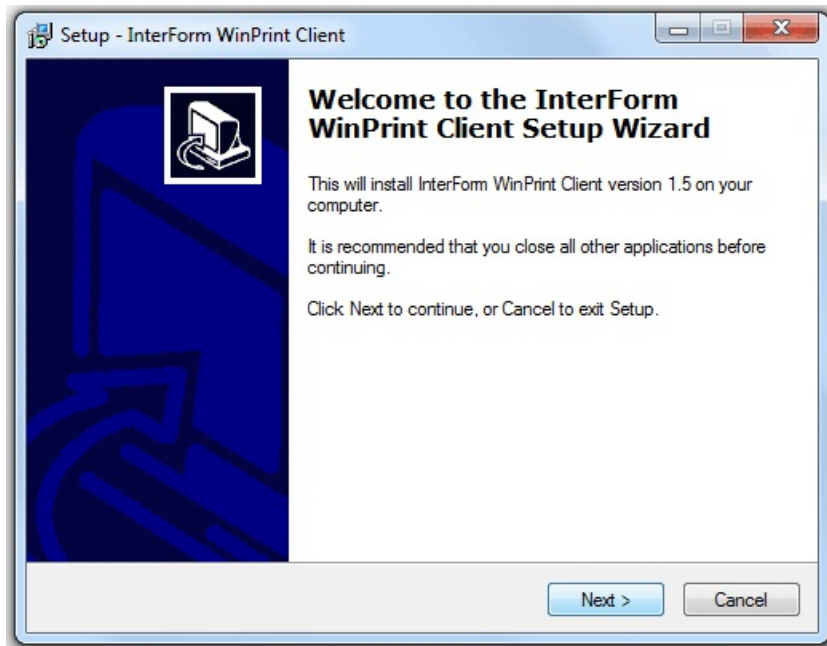
A vital part of the WinPrint module is the WinPrint Client. This client application is installed on one or more Windows PC's, so that InterForm400 is able to 'see' the relevant printers on these PC's.

An unlimited number of WinPrint Clients can be installed. As prerequisite for the WinPrint client is **Java Runtime Environment (JRE)** on the PC. A JRE installation file comes with InterForm400 and can be downloaded from the IFS via:  
/APF3812Home/Designer/jre-6u5-windows-i586-p-s.exe

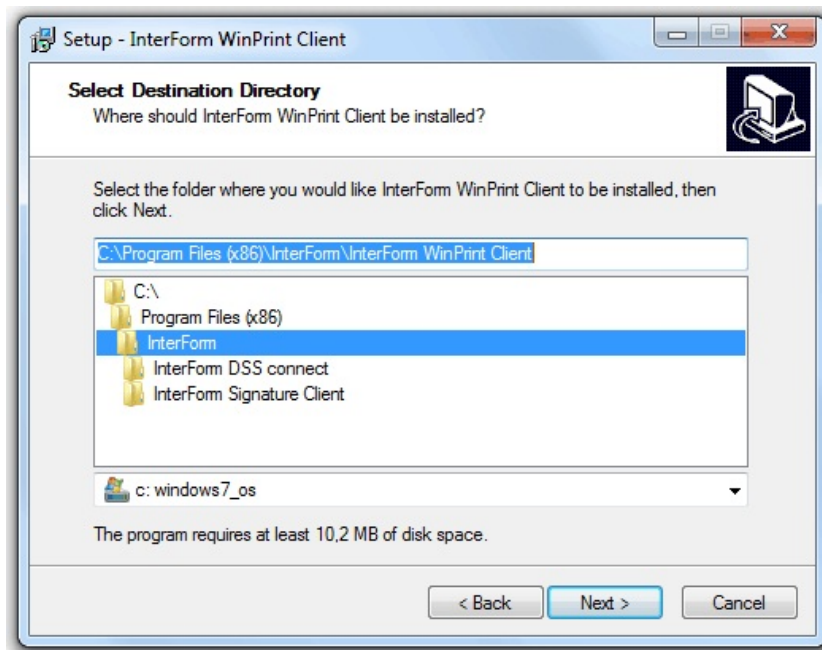
- or you can download the latest version from here:  
<http://www.java.com/en/download/index.jsp>

The setup file for the WinPrint client can be downloaded from the IFS in:  
/APF3812Home/InterForm WinPrint Client/Setup InterForm WinPrint Client.exe

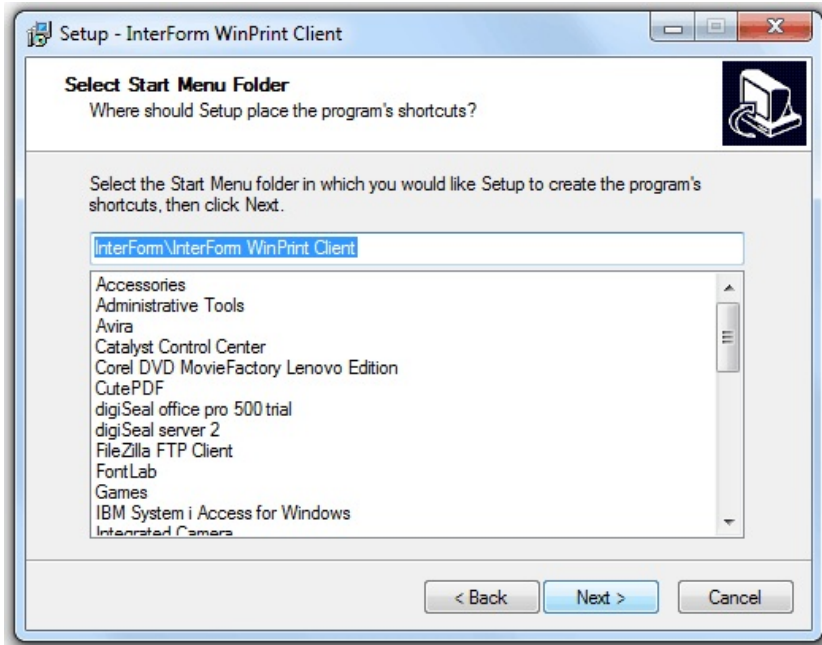
After downloading it from the IFS and running it locally you will see the windows below:



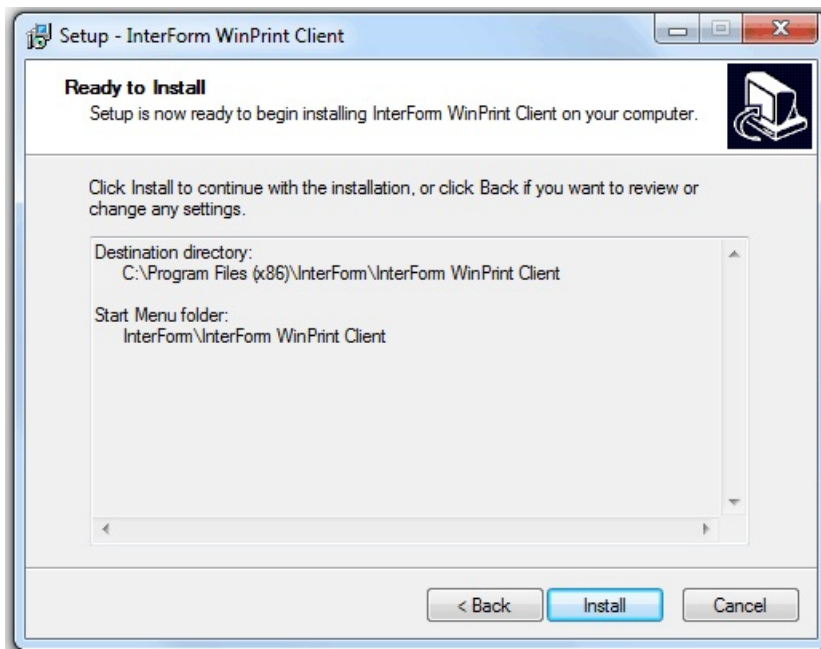
Click 'Next' and you will see this:



In the screen above the default path for installation is suggested. You can change it if needed. Click 'Next' and you will see this screen:



In this screen you can setup the Start Menu folder to use for the WinPrint Client. Click 'Next' to proceed:

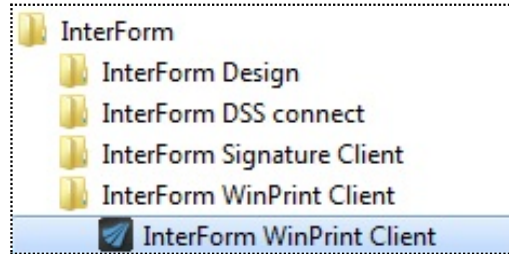


Here you click 'Install' to install the WinPrint client as indicated.

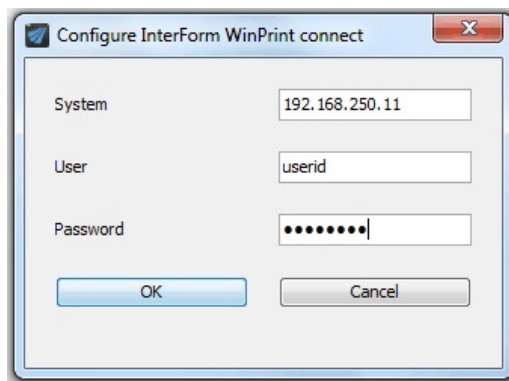
---

# Starting up the WinPrint Client

You start up the WinPrint Client (if you have used the default start menu folder) by selecting 'Programs', 'InterForm', 'InterForm WinPrint Client' and 'InterForm WinPrint Client' in Windows:

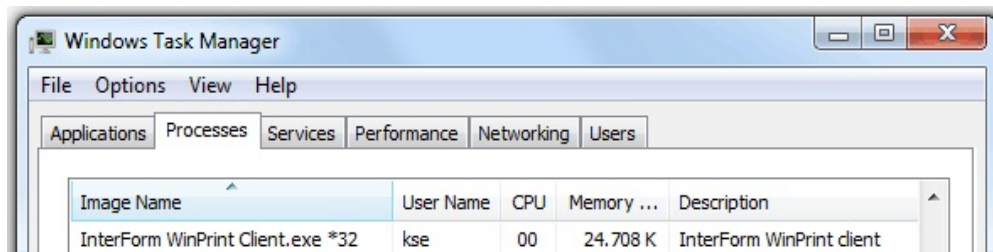


When running the WinPrint Client for the first time you will be asked for the IP-address (or host name) of the System i, your user ID and password to this machine:



(The password will not be saved on the PC).

After signing on to the System i, the WinPrint Client is not seen directly in the task bar, but is listed as an active process:

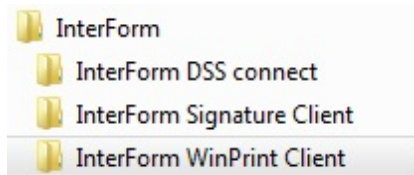


---

## Starting the WinPrint Client Automatically

If you want to startup the WinPrint Client automatically during startup of the Windows PC, then you can do that by copying a shortcut into the startup folder. You do that in this way:

First find the InterForm WinPrint Client exe file. It is found in the destination directory you selected during the install:

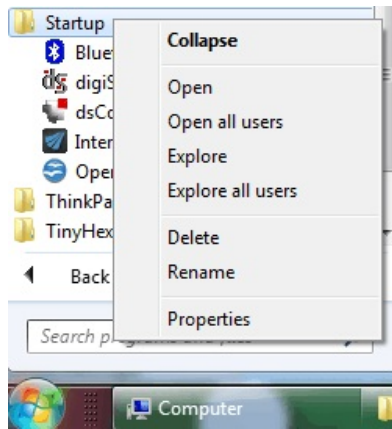


File Name	Modified	Type	Size
cimage.dll	14-02-2009 22:29	Application extens...	760 KB
GdiPlus.dll	16-08-2004 17:37	Application extens...	1.672 KB
<b>InterForm WinPrint Client.exe</b>	10-01-2011 18:19	Application	4.684 KB
unins000.dat	24-01-2011 11:03	DAT File	2 KB
unins000.exe	22-09-2003 04:00	Application	75 KB
winprint2.exe	07-01-2011 10:35	Application	3.196 KB

Now right click on the 'InterForm WinPrint Client.exe' file and create a shortcut for this file. Right click on the short cut and chose 'cut'.

Finally you need to copy the shortcut to the startup folder. You can e.g. do that in this manner in Windows 7:

Select the Windows Start icon, 'All Programs' and right click on the 'Startup' folder:



Here you select either 'Explore' or 'Explore all users' depending if you want to startup the client for the current user or for all. After you have made your choice, you paste in the shortcut created above.

---

# Starting up the WinPrint subsystem

You need to start the WINPRINT subsystem on the System i before the WinPrint Clients can communicate with the host.

You can start the WINPRINT subsystem in these manners:

---

## 1. Via the Menu

From the InterForm400 Main Menu you select '80. Administering InterForm 400' followed by option '30. WinPrint administration':

```
WinPrint administration                               System.....: PMK11
Subsystem....: WINPRINT                             Workstn ID...: QPADEV000B
  Library...:  APF3812                               CCSID ....: 00278
                                                    User ID.....: KSE

Select one of the following options:

  1. Work with Windows PC's

  5. Display WinPrint queues

 10. Start the WINPRINT subsystem
 11. End the WINPRINT subsystem
 12. Work with the WINPRINT subsystem

Option:

F3=Exit           F6=Display messages       F12=Cancel
```

Here you can start the subsystem via option '10. Start the WINPRINT subsystem'.

---

## 2. With the AUTO\_FORM subsystem

You can make the WINPRINT subsystem start when the AUTO\_FORM subsystem starts (AUTO\_FORM is the subsystem, where Auto Forms Control jobs of InterForm400 are running).

In order to do that you select this in InterForm400:

- 70. Configuration and licences
- 2. Configure InterForm 400

Now press Enter until you get to this screen:

```
Configure InterForm 400                                     APF101D
                                                           13/14

WinPrint subsystem

Subsystem description . . . WINPRINT
Library . . . . . APF3812

Start automatic when AUTO_FORM is started ?           Y (Y N)

F3=Exit                                               F12=Cancel
```

Here you can change the name and library of the subsystem and also chose to start the subsystem whenever the AUTO\_FORM subsystem is started.

---

### 3. Via a command

You can start the WINPRINT subsystem with this command:

```
STRSBS SBSDB(APF3812/WINPRINT)
```

If you include the command in the IPL startup program you should also include a MONMSG command after this - just in case if the command should fail.

---

# Configuring WinPrint

As default WinPrint will communicate on the LAN via port number 44556. If you want to use a different port number you can change it as described below. You will of course need to change the port number for both the System i and any WinPrint Clients that are already installed.

---

## Changing the port number on the System i

If you want to change the port number, you will first need to end the WINPRINT subsystem before changing the port number.

You can change the port number that the host is using by going into InterForm400 with the command: APF3812/APFMENU and select option '70. Configuration and licences' followed by option '4. Configure WinPrint':

```
          Configure WinPrint                                WIC400D
WinPrint subsystem . . . : WINPRINT
  Library . . . . . : APF3812
Port . . . . . : 44556 10000-65535

F3=Exit  F12=Cancel
```

Here you can change the port number if needed. After the change you should of course start the WINPRINT subsystem again.

---

## Changing configuration on the WinPrint Client

If you want to change the port number or other parameters of the WinPrint Client, you will need to edit the settings.xml file. The file is found in:

C:\users\<<my-userID>\.InterFormWinPrint\

The file can e.g.be edited via Notepad and contains this information:

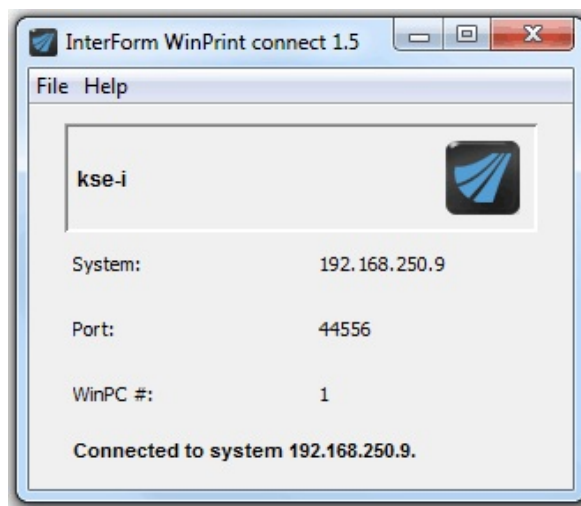
```
<?xml version="1.0" encoding="UTF-8" standalone="no"?>
<!DOCTYPE properties SYSTEM "http://java.sun.com/dtd/properties.dtd">
<properties>
<entry key="winPCID">ERGE9Q4F3HDFYME96Q8T11D72R13Z5TM</entry>
<entry key="port">44556</entry>
<entry key="user">kse</entry>
<entry key="system">192.168.250.11</entry>
<entry key="winPCseq">1</entry>
</properties>
```

If you want to connect to the System i via another port number you can change the port number as marked in bold above as well as the identification/IP-address of the System i (system).

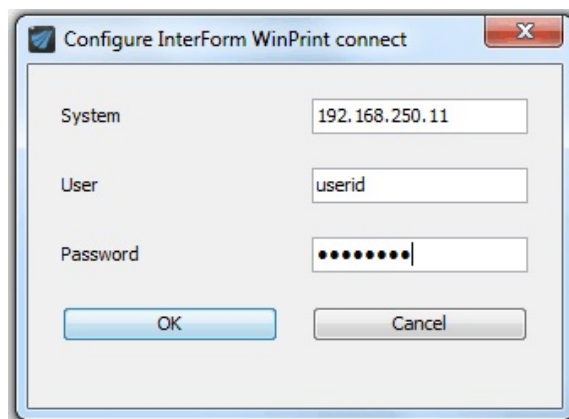
To change some of the settings you can also open the active process by clicking on this icon on the left of the windows task bar:



This will open this window:



If you now select 'File' and 'Settings' you can connect to another host if you want:



# Using WinPrint

If you have installed the WinPrint Client on at least one PC, setup the same port number on both the host and the clients and started the WINPRINT subsystem, then you can start to use WinPrint.

It is very easy, as it is implemented as an extra function in Auto Forms Control in InterForm400. For details about Auto Forms Control (which is a central part of InterForm400), you can refer to the InterForm400 Manual.

To add a new sequence line in Auto Forms Control (AFC) you go into InterForm400 with the command APF3812/APFMENU and select:

5. Work with Auto Forms Control
1. Functions attached to Output Queues

Now use option '2=Change' for the output queue that should use WinPrint and press Enter twice.

Now add a new sequence line with the function 'W = Print to Windows printer'. Press F23 to see that possibility:

```
Queue:  AFC_INPUT1      Library:  APF3812

Seqnbr  Funct   Form type  Save Jobname  Filename
0002    6

          Hold Spooled File

Seqnbr  Function      Suspend
1.0     █             _ *=Suspend

I = Index spooled file
P = Send PDF email / Fax
N = Create PDF File
W = Print to Windows printer
* = Comment
```

When you select 'W' as the function to execute you will see the screen below, where you select the spooled file attributes to trigger the W-function:

```

Update AFC-functions attached to output queues                                AFC305D
Queue:  AFC_INPUT1      Library:  APF3812
Seqnbr Funct  Form type  Save Jobname  Filename  Device file  Program
0002    6
          Hold Spooled File

Seqnbr Function  Attributes of input file for which to execute the function
1.0      W
          Form type . . . . . _____
          Save attribute . . . . . _____ *NO *YES
          Jobname . . . . . _____
          Spooled file name . . . . . _____
          Device file . . . . . _____
          Library . . . . . _____
          Program that opened file . . . . . _____
          Library . . . . . _____
F3=Exit          F13=Fold/Unfold                                F12=Cancel

```

On the next screen you state the setup of the merge:

```

Update AFC-functions attached to output queues                                AFC305D
Queue:  AFC_INPUT1      Library:  APF3812
Seqnbr Funct  Form type  Save Jobname  Filename  Device file  Program
0002    6
          Hold Spooled File

Seqnbr Function  Print to Windows printer
1.0      W
          Overlay name . . . . . IF400DEMO
          File set . . . . . SAMPLE
          or overlay selector . . . . . _____
          Primary/Secondary set . . . . . *PRI      *PRI, *SEC
          Unicode output . . . . . *INPUT      *INPUT, *YES
          Color support . . . . . *YES        *NO, *YES
F3=Exit          F4=Prompt                                F12=Cancel

```

The overlay or overlay selector must be one that is defined in a file set intended for PCL and PDF output (Laser) - not for label printers. Refer to the InterForm400 manual for a complete explanation of each parameter. Press Enter to select the Windows PC and printer, that you want to print to:

```

Update AFC-functions attached to output queues                                AFC305D
Queue:  AFC_INPUT1      Library:  APF3812
Seqnbr Funct  Form type  Save Jobname  Filename  Device file  Program
0002     6
          Hold Spooled File

Seqnbr Function  Print to Windows printer
1.0     W
          Windows PC . . . . .
          _____
          Windows printer . . . . .
          _____
          _____

F3=Exit          F4=Prompt          F12=Cancel

```

Now place the cursor on the 'Windows PC' field and press F4. This will list all Windows PCs which are known to the host (PCs that have - or are - connected via the WinPrint Client). In our case the list looks like this:

```

Select windows pc                                                        WIC220D
Type options, press Enter.
1=Select
Opt  Windows PC                Number
-   karsten-PC                2
-   kse-i                     1

```

Here you select the right PC with '1=Select' and you will return to the previous screen where you can press F4 to list all printers installed on the PC you selected:

```

Select windows printer                                                  WIC230D
Windows PC . . . . . : kse-i
Type options, press Enter.
1=Select
Opt  Windows printer
-   Fax
-   HP Color LaserJet 4700
-   HP LaserJet TEST 4250 PCL 5 i Suldrup
-   HP LaserJet 2200 Series PCL 5
-   HP LaserJet 4
-   Microsoft XPS Document Writer
-   RICOH Aficio AP400N PCL 5e
-   ZDesigner S4M-300dpi ZPL

End

F3=Exit  F5=Refresh  F12=Cancel

```

Select the printer with '1=Select' and you have setup the W-function in Auto Forms Control.

In order to run the W-function you now make sure that the Auto Forms Control subsystem and the relevant AFC job is running and any new spooled file on the output queue can trigger the W-function.

It is highly recommended to get familiar with Auto Forms Control in general (e.g. via the InterForm400 manual) before running this function.

---

# Limitations of WinPrint

With WinPrint you can print on as good as any printer as long as you can find a windows printer driver for it. There are however a few things to point out when you use WinPrint:

## **Printing is not as fast as normal InterForm400 printing**

When you print via WinPrint the printing speed is mainly limited by Windows and the used driver. This will usually mean slower printing compared to normal InterForm400 printing. (However normal InterForm400 printing is also VERY fast..).

## **The WinPrint Client can only connect to one System i**

If you have multiple System i's you should remember, that a Windows PC can only run as WinPrint Client for one System i.

## **All overlays must be defined in a file set for PCL/PDF**

Even though you might want to use WinPrint to add support for a very special label printer you should always use overlays in file sets intended for PCL/PDF output only. You can state the exact dimensions of the labels (necessary if you print on label printers) with the extension of the X=Custom size. This function has been extended in the 2011 versions of InterForm400. Please refer to the InterForm400 manual for details.

## **PCL files are ignored**

If you include PCL files as graphical elements in the design, then these will be ignored when printing with WinPrint. (PCL files are shown in the graphical designer either).

## **Font support**

Proportional Type faces (fonts) like 52, 4148, 4168, 16602, 24580 and 24607 are printed as Arial.

Proportional Type faces (fonts) like 5, 4101, 4113, 4197, 16901, 24591, 24623, 24703 and 25093 are printed as Times New Roman.

Courier is used for all fonts with fixed width.

If you want to print in other fonts you will need to install a TTF (True Type Font) to be used for PDF output in InterForm400 - WinPrint will also use the autodownload setup for the \*PDF printer group.

## **Barcodes on low resolution label printers**

When printing labels with barcodes directly from InterForm400 (in either ZPL or IPL), then the barcodes are generated by the printer firmware. This makes it more likely to get a readable barcode - even when printing relatively small barcodes on low resolution printers (e.g. 203 dpi) - compared to when printing with WinPrint. To be safe it is suggested to print out a representative collection of barcodes with WinPrint and scanning them before using the barcodes in full production.

## **Stapling, PJL commands and duplex are not supported**

Stapling, user defined PJL commands and duplex are not supported for WinPrint. Such definitions are ignored.

## **OMR (Optical Mark Recognition) is not supported**

OMR for inserter machines (putting the printed output into envelopes) is not supported.

# Troubleshooting

If you should have problems when using WinPrint, you should check the suggestions below before contacting your local InterForm400 support:

## The print out does not look exactly like the overlay

There might be minor differences in the fonts, that are printed. If you want to specify the exact fonts, you should consider to install True Type Fonts for PDF in InterForm400 and link them with the used fonts in autodownload. Please also notice that PCL files are ignored for WinPrint output. Please check out the limitations mentioned on page [18](#).

## Nothing gets printed

If nothing gets printed you should go through this check list:

- Is the WINPRINT subsystem active on the System i? If not: Start it.
- Is the WinPrint Client active on the relevant PC? (Check the tasklist).
- Is the System i able to 'see' the client? From the InterForm400 Main Menu select '80. Administering InterForm 400', '30. WinPrint administration' and '1. Work with Windows PC's'.

This will show a screen like below:

```
Work with Windows PCs WIC100D
Type options, press Enter.
  2=Change
Opt  Seqnbr.  Windows PC          Status
  1      1   kse-i             *ACTIVE
  2      2   karsten-PC        *ERROR
```

Here you can see the status of each PC. If a PC has status '\*ERROR', then the PC cannot be seen by the host.

- If the PC has status '\*ERROR' above (and the WinPrint Client is active): Does both the host and the WinPrint Client use the same port number?
- PC status=\*ERROR: Is a firewall blocking the used port number?

---

# Index

Changing the Port number. . . . .	<a href="#">12</a>
Configuring WinPrint. . . . .	<a href="#">12</a>
Contact information. . . . .	<a href="#">2</a>
Installing the WinPrint Client. . . . .	<a href="#">5</a>
Introduction to WinPrint. . . . .	<a href="#">5</a>
Setting up the WinPrint Client. . . . .	<a href="#">8</a>
Support information. . . . .	<a href="#">2</a>
Table of Contents. . . . .	<a href="#">4</a>
Using WinPrint. . . . .	<a href="#">14</a>